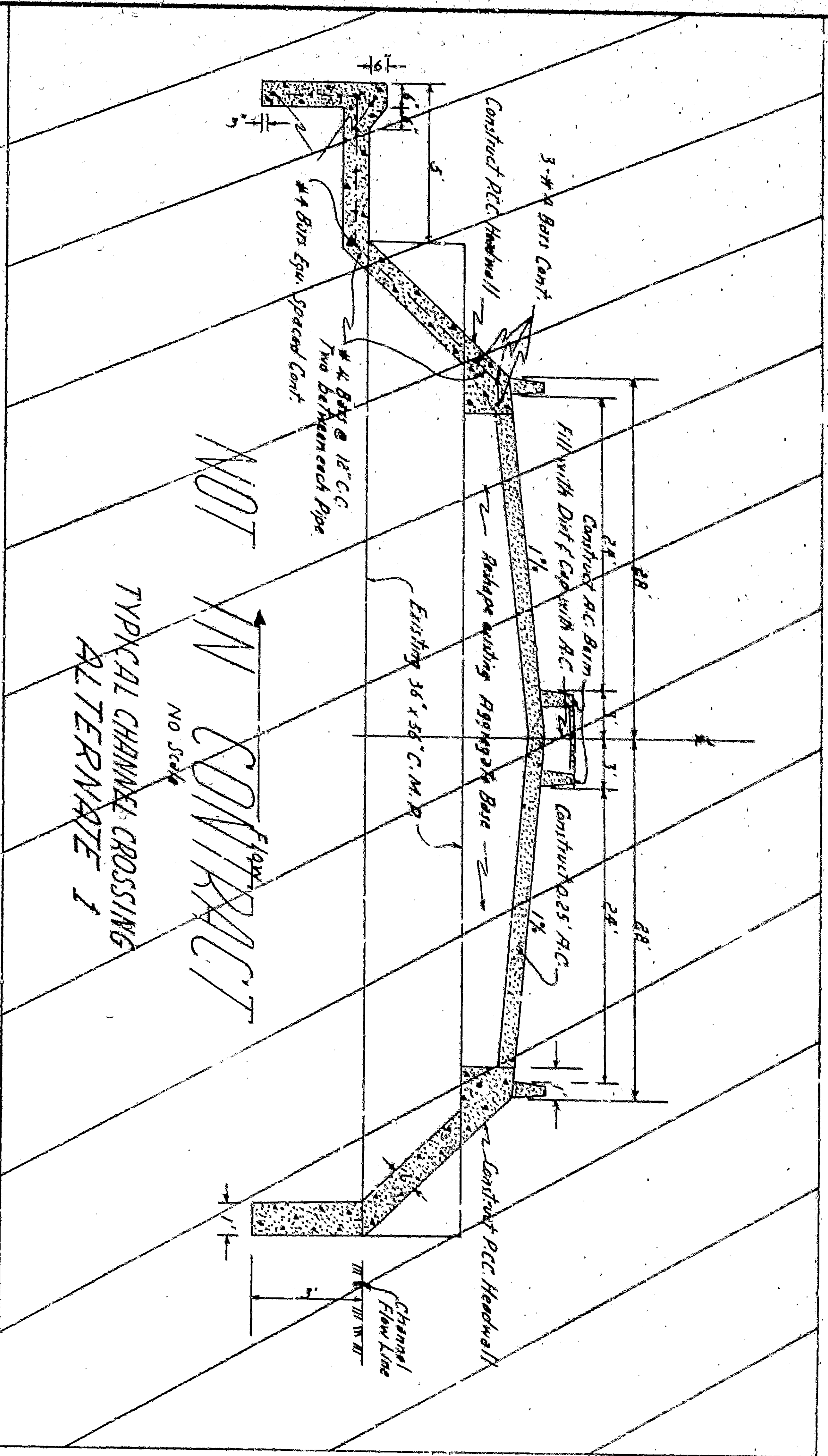


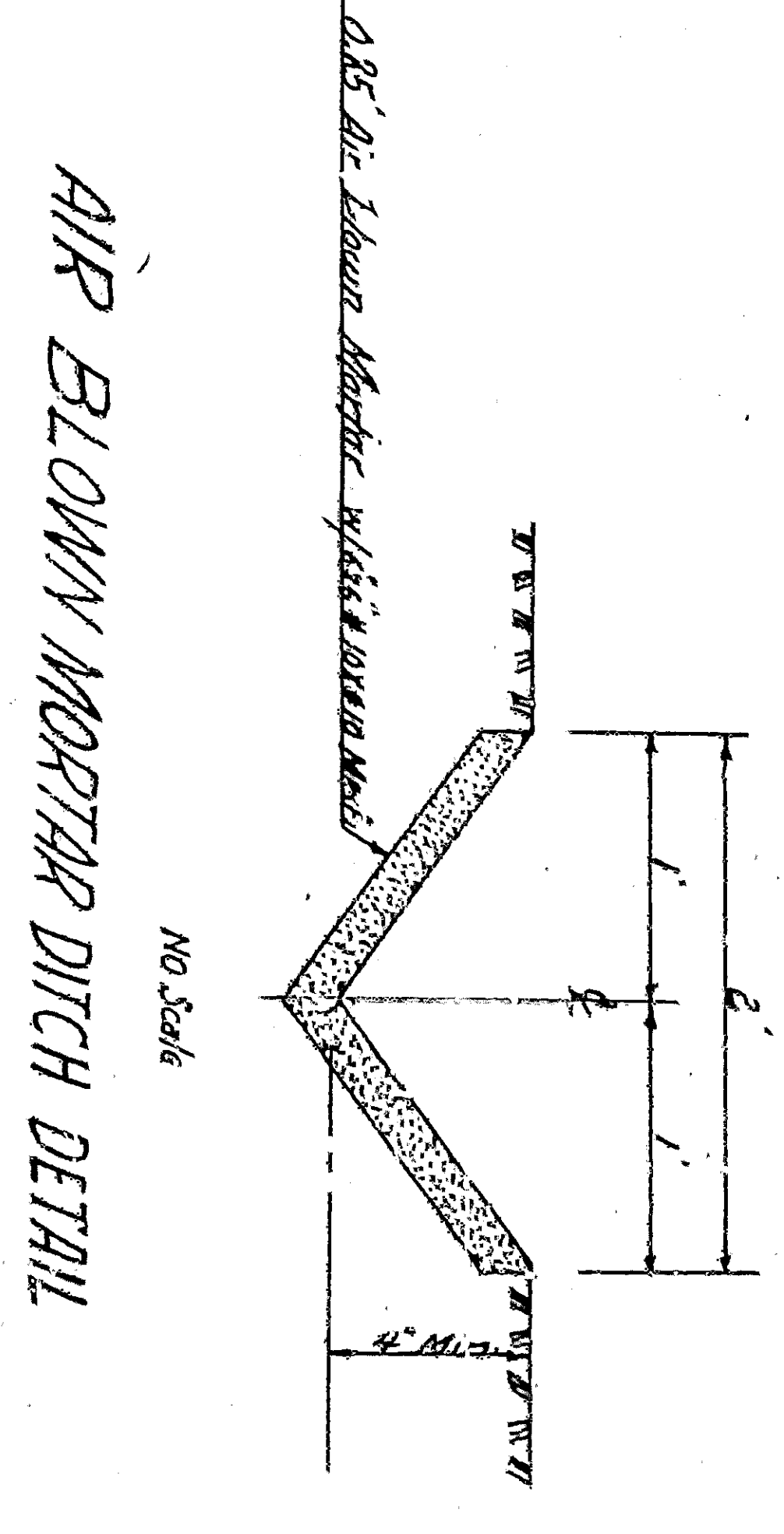
Scale 1/4" = 1'-0"

Scale 1/4" = 1'-0"

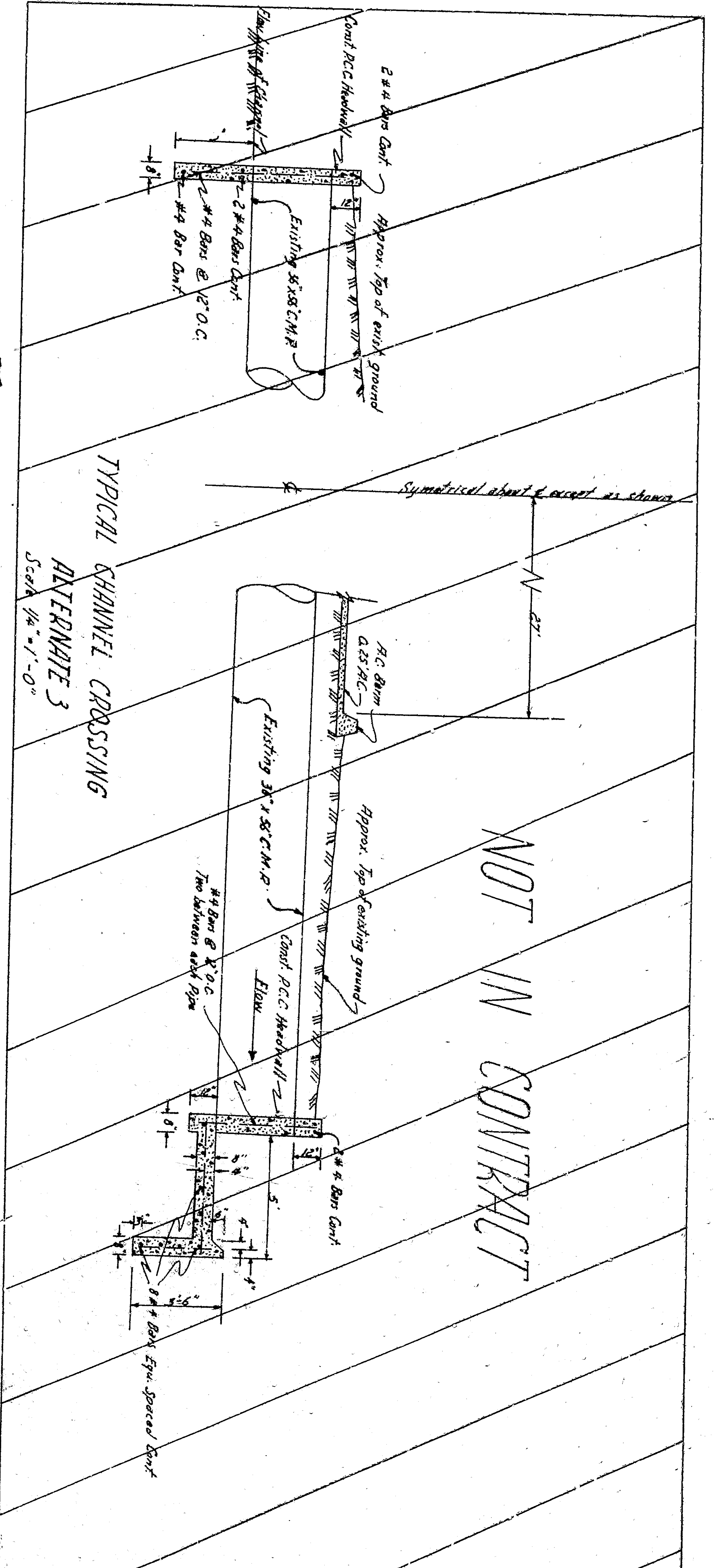
APPROVED	19.44	CITY OF SAN BERNARDINO
DRAWING NO. 3449	REGISTERED CIVIL ENGINEER NO. 11652	DEPARTMENT OF ENGINEERING
CHECKED BY	RECOMMENDED	ACCESS ROAD
SHEET 3 OF 3		Revisions: South E. Street and a point 1500ft. West



NOT IN CONTRACT
TYPICAL CHANNEL CROSSING
ALTERNATE 1

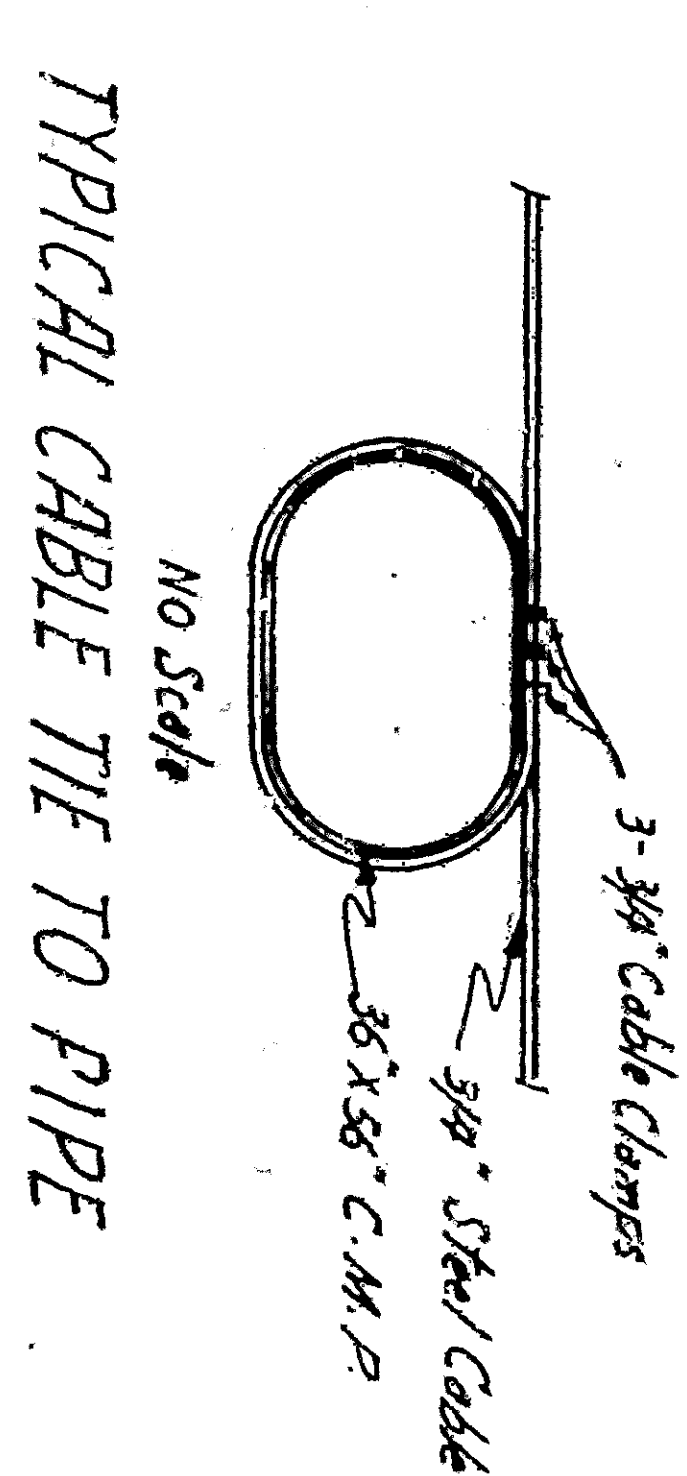


AIR BLOWN MORTAR DITCH DETAIL
NO SCALE

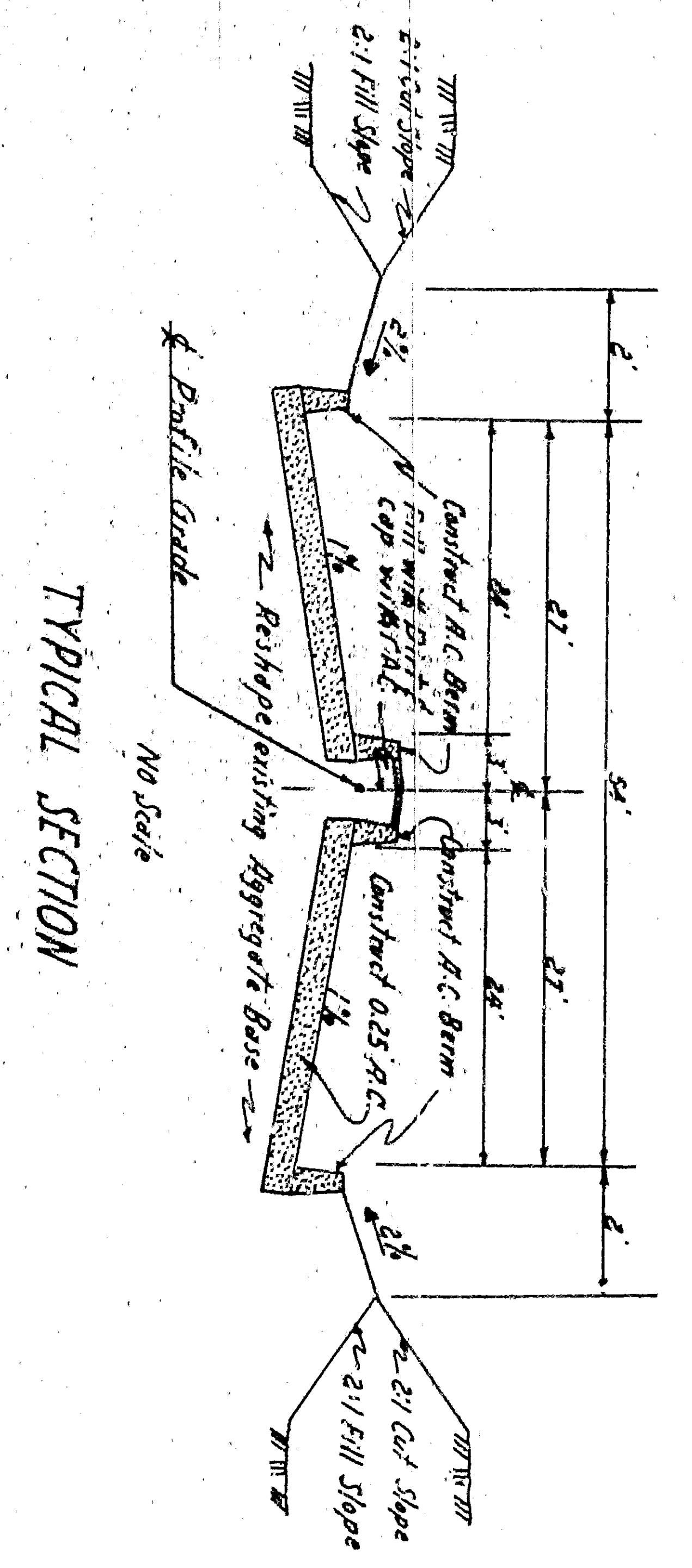


TYPICAL CHANNEL CROSSING
ALTERNATE 3
Scale 1/4" = 1'-0"

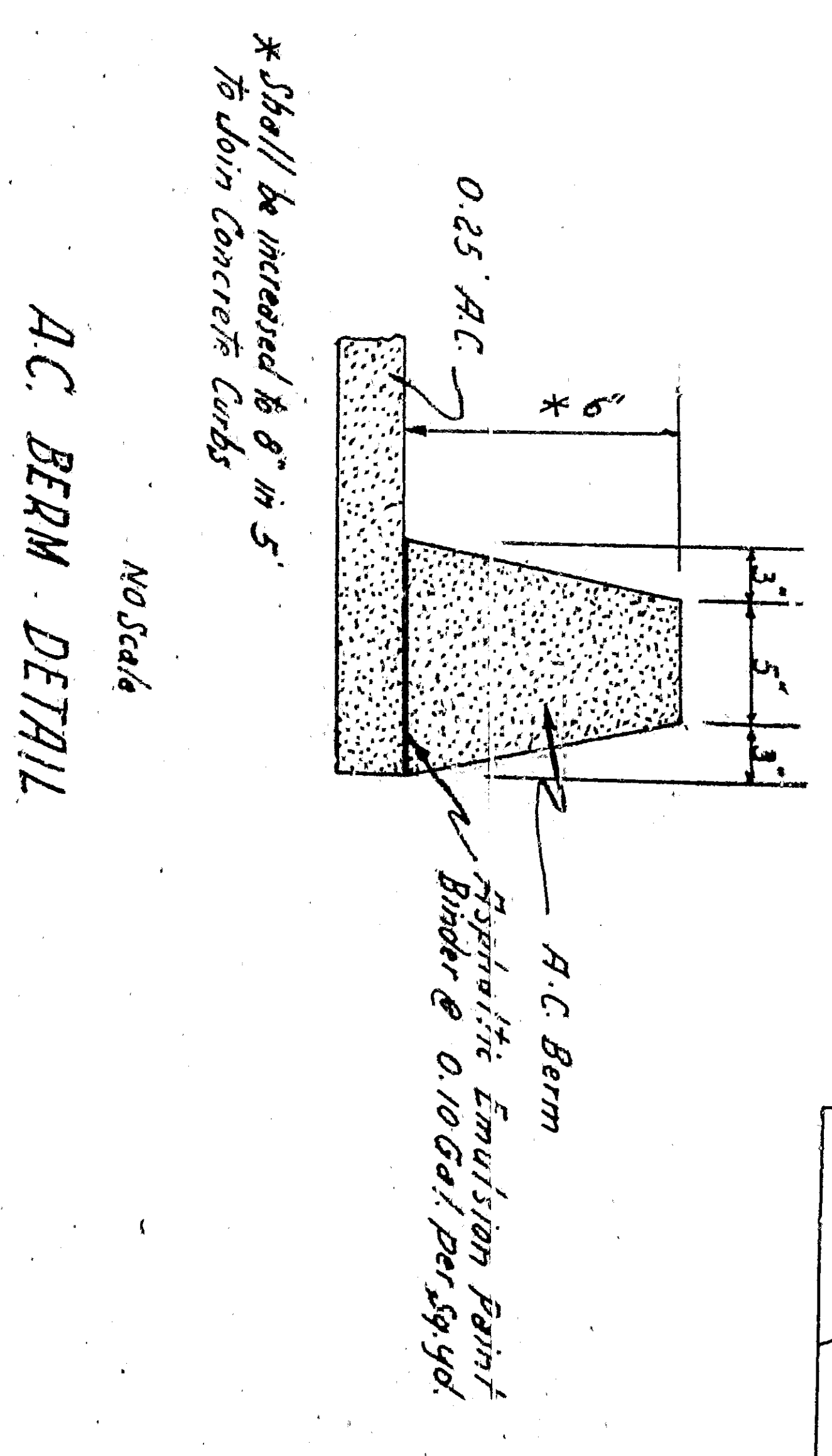
NOT IN CONTRACT



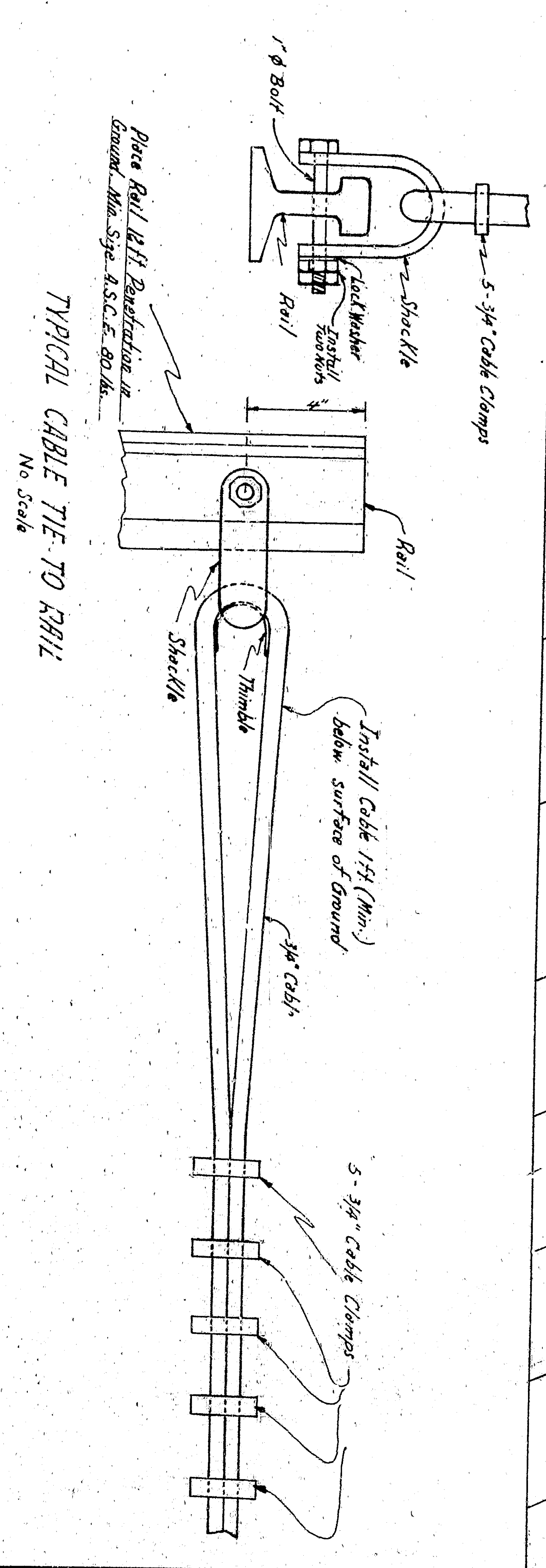
TYPICAL CABLE TIE TO PIPE
NO SCALE



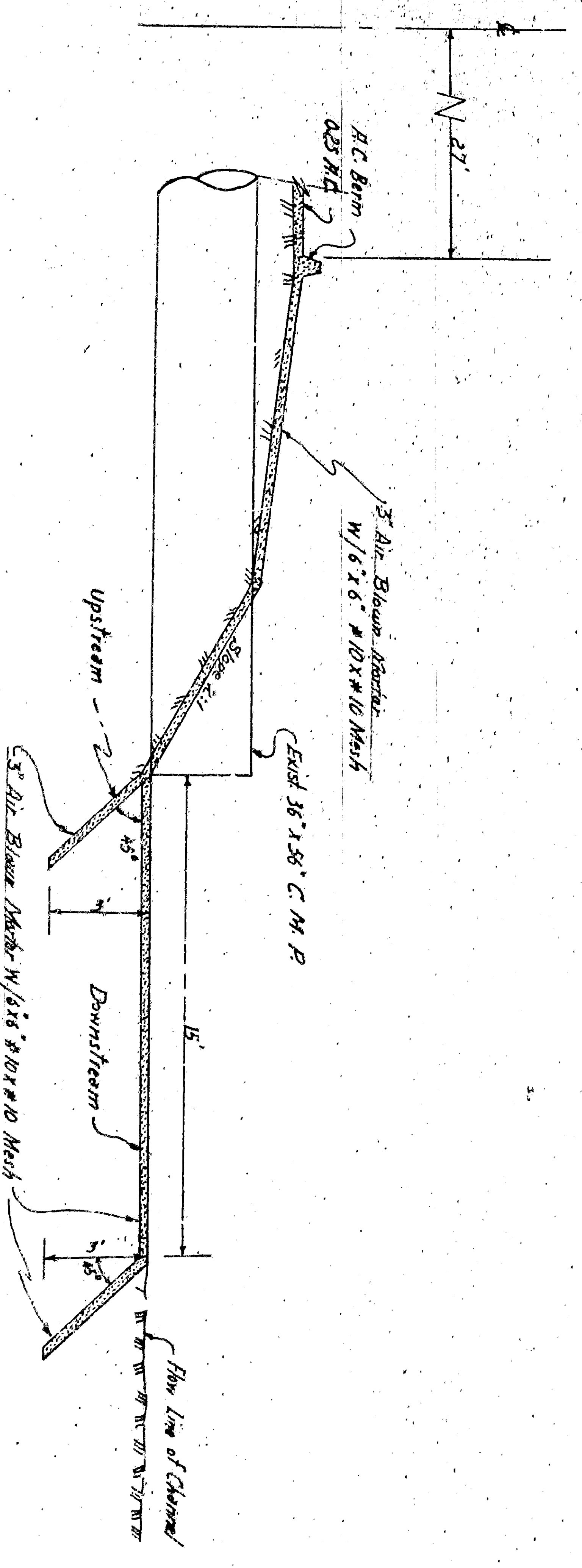
TYPICAL SECTION
NO SCALE



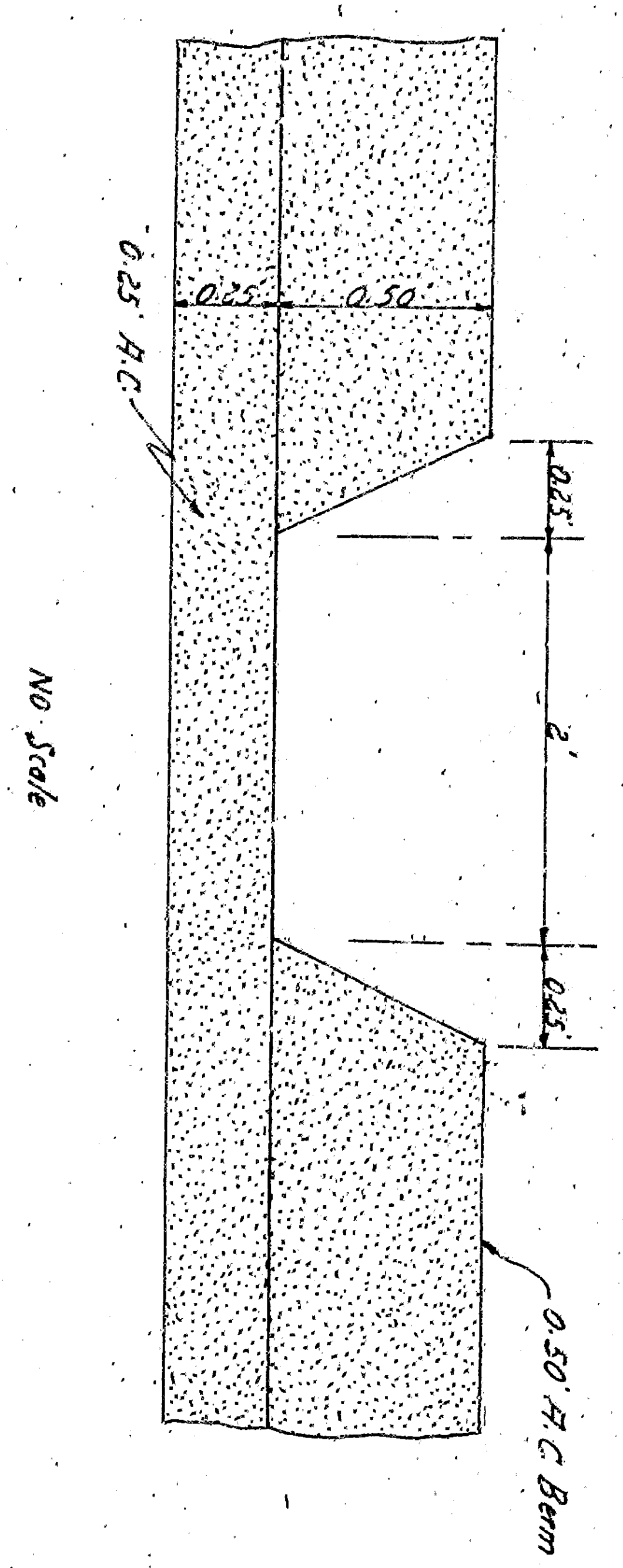
A.C. BERM DETAIL
NO SCALE



TYPICAL CABLE TIE TO RAIL
NO SCALE



TYPICAL CHANNEL CROSSING - ALTERNATE 2
Scale 1/4" = 1'-0"



BERM OPENING DETAIL
NO SCALE

APPROVED	19.44	DEPARTMENT OF ENGINEERING
DRAWING NO. 3449		CITY OF SAN BERNARDINO
CHECKED BY		ACCESS ROAD
SHEET 3 OF 3		Reviewed South E. Street and a point 1500ft West
RECOMMENDED		Drawing